

How to install and configure AVD (Azure Virtual Desktop) Remote Desktop Client

Table of Contents

Introduction	2
Prerequisites	2
Download the Remote Desktop client installer	2
How to install the Remote Desktop Client	3
On Windows	3
Configure the client	5
Subscribe to a workspace	5
Connect to your applications	7

Introduction

The Microsoft Remote Desktop client is used to connect to Azure Virtual Desktop service to access your desktops and applications. This article shows you how to connect to Azure Virtual Desktop with the Remote Desktop client for Windows, which will only allow you to subscribe to a feed made available to you by your organization administrators.

With the Microsoft Remote Desktop clients, you can connect to the Azure Virtual Desktop service and use and control all apps that your admin has made available to you like Word, Excel, Microsoft Edge web browser, Microsoft Teams, Outlook and some other apps your organization use. There are clients available for many different types of devices on different platforms and form factors, such as desktops and laptops, tablets, smartphones, and through a web browser. Using your web browser on desktops and laptops, you can connect without having to download and install any software.

There are many features you can use to enhance your remote experience, such as:

- ✓ Multiple monitor support
- ✓ Custom display resolutions
- ✓ Dynamic display resolutions and scaling
- ✓ Device redirection, such as webcams, storage devices, and printers
- ✓ Microsoft Teams optimizations

Prerequisites

Before you can access your resources, you'll need to meet the prerequisites:

- ✓ Internet access.
- ✓ A device running one of the following supported versions of Windows:
 - Windows 11
 - Windows 11 IoT Enterprise
 - Windows 10
 - Windows 10 IoT Enterprise

Download the Remote Desktop client installer.

The most typical client version (Windows x64-bit) can be downloaded from the following link:

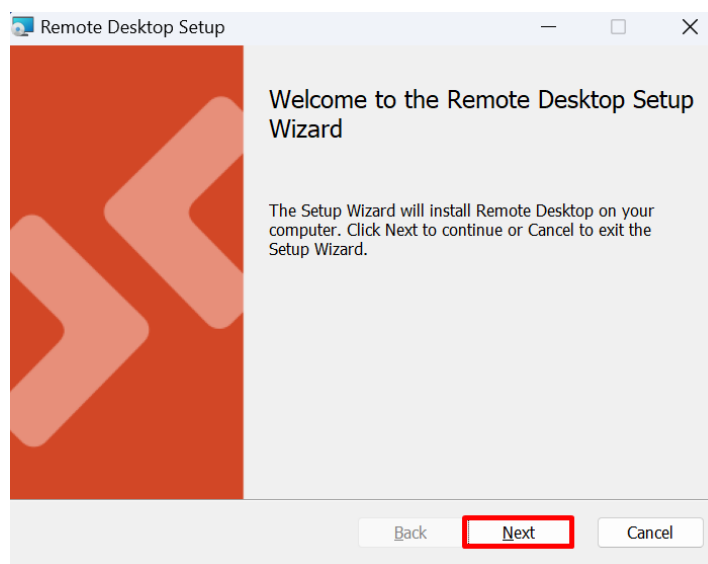
<https://go.microsoft.com/fwlink/?linkid=2139369>

How to install the Remote Desktop Client

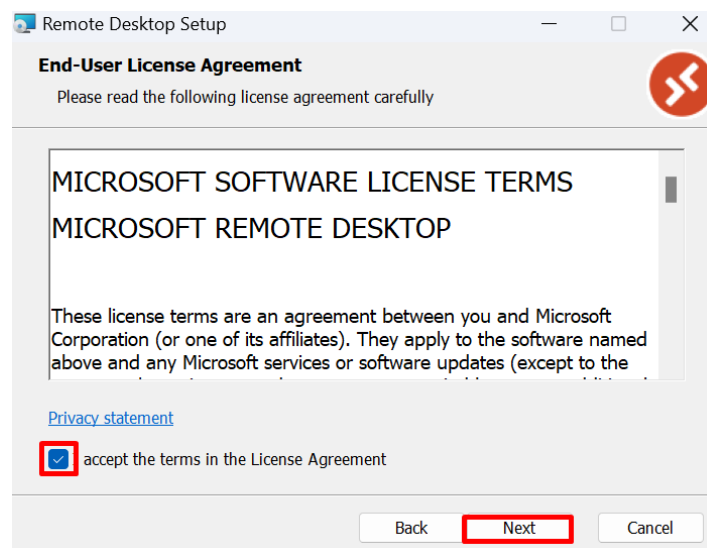
On Windows

Once you have downloaded the Remote Desktop client, you will need to install it by following these steps:

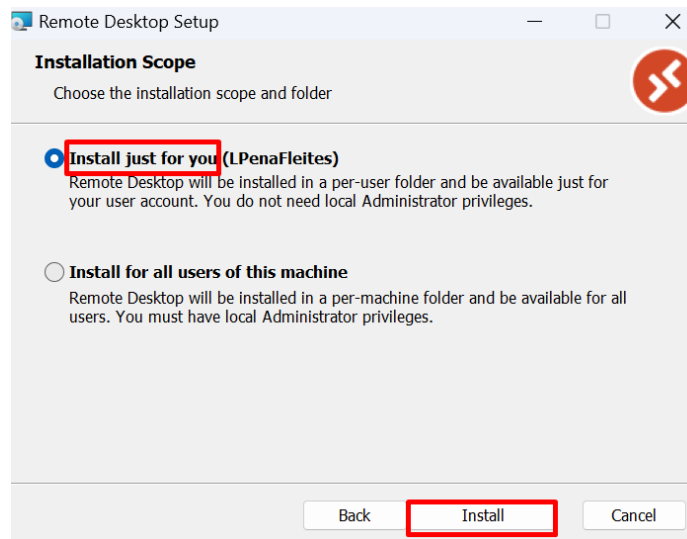
1. Run the installer by double-clicking the file you downloaded.
2. On the welcome screen, select Next.



3. To accept the end-user license agreement, check the box for I accept the terms in the License Agreement, then select Next.



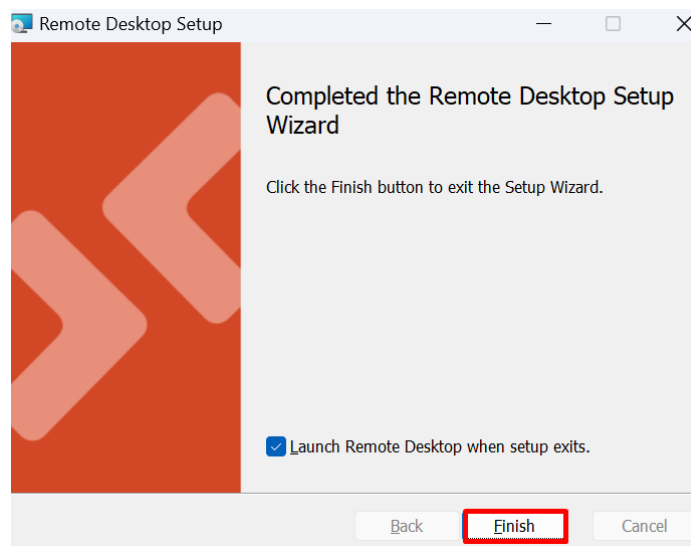
4. For the Installation Scope, select one of the following options:



- **Install just for you:** Remote Desktop will be installed in a per-user folder and be available just for your user account. You don't need local Administrator privileges.
- **Install for all users of this machine:** Remote Desktop will be installed in a per-machine folder and be available for all users. You must have local Administrator privileges.

5. Select Install.

6. Once installation has completed, select Finish.



7. If you left the box for Launch Remote Desktop when setup exits selected, the Remote Desktop client will automatically open. Alternatively, to launch the client after installation, use the Start menu to search for and select Remote Desktop.

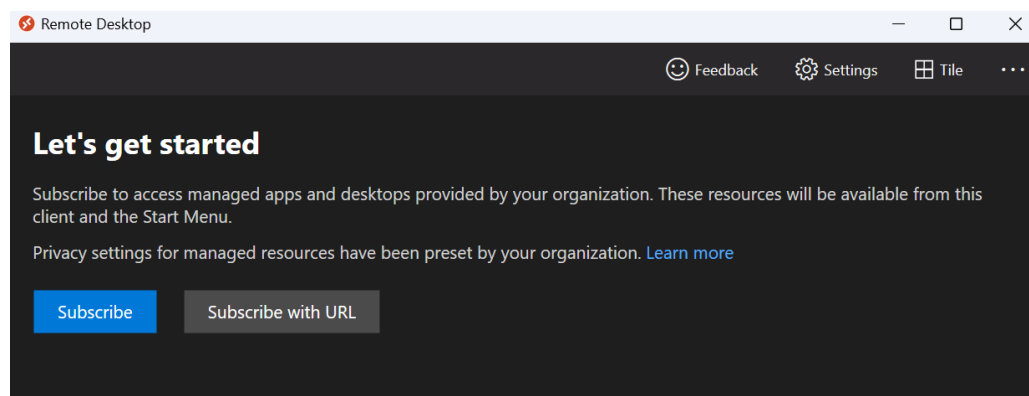
Note: If you have the Remote Desktop client for Windows and the Azure Virtual Desktop app installed on the same device, you may see the message that begins **A version of this application called Azure Virtual Desktop was installed from the Microsoft Store**. Both apps are supported, and you have the option to choose **Continue anyway**, however it could be confusing to use the same remote resource across both apps. We recommend using only one version of the app at a time.

Configure the client.

Subscribe to a workspace.

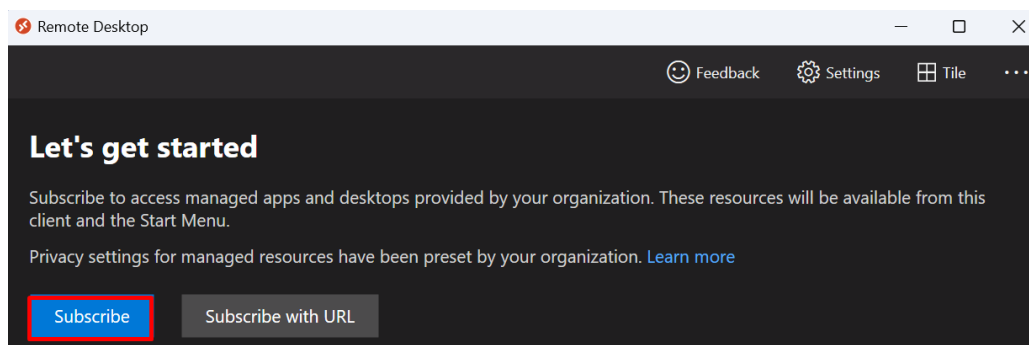
A workspace is your personal space where you can find all apps your organization assigned to you to use. It combines all the applications that have been made available to you by your admin. To be able to see these in the Remote Desktop client, you need to subscribe to a workspace by following these steps:

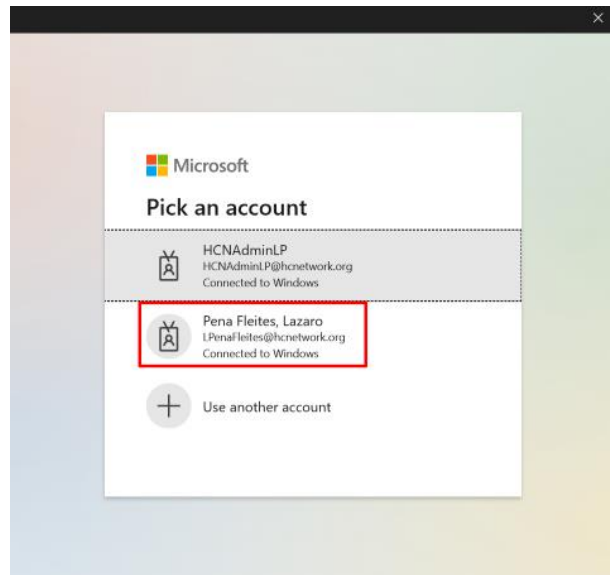
1. Open the Remote Desktop client.



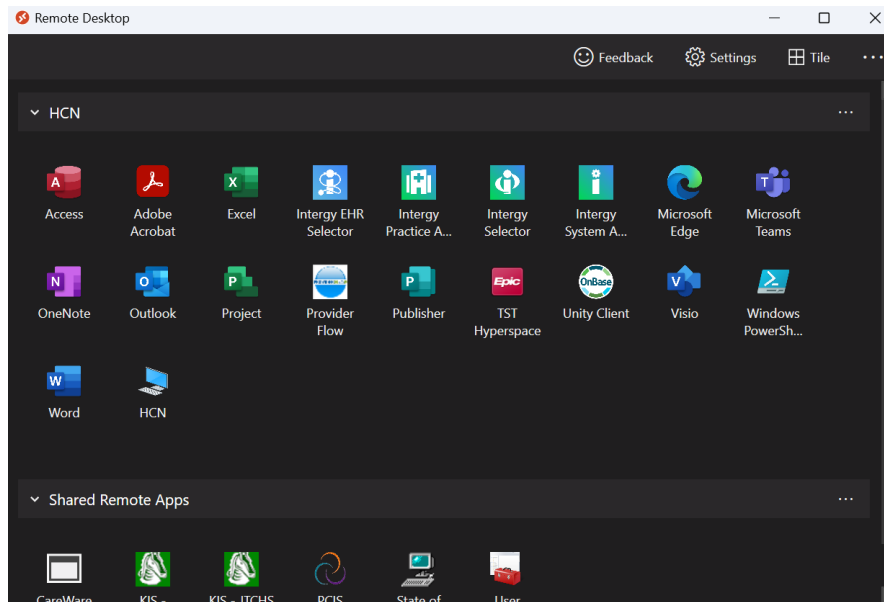
2. The first time you will need to subscribe to a workspace, from the Let's get started screen, select **Subscribe**. Then, sign in with your user account when prompted, for example user@hcnetwork.org. After a few seconds, your workspaces should show the desktops and applications that have been made available to you by your admin.

For this example, we will subscribe to our workspace using our organization credentials.



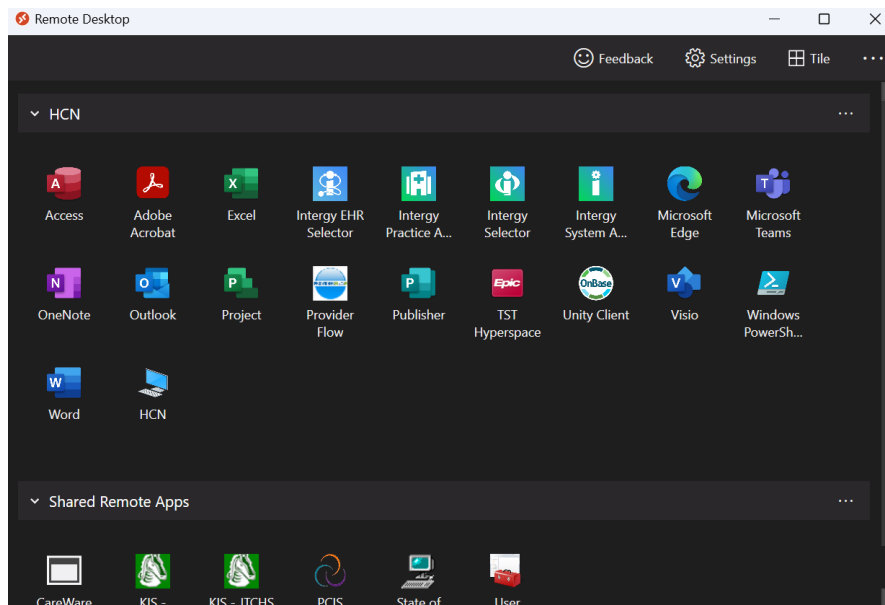
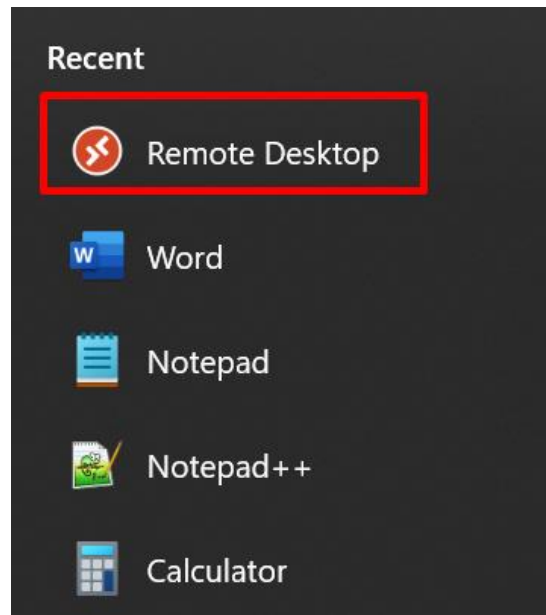


Finally, you will see all apps available for you to use and assigned by an administrator.

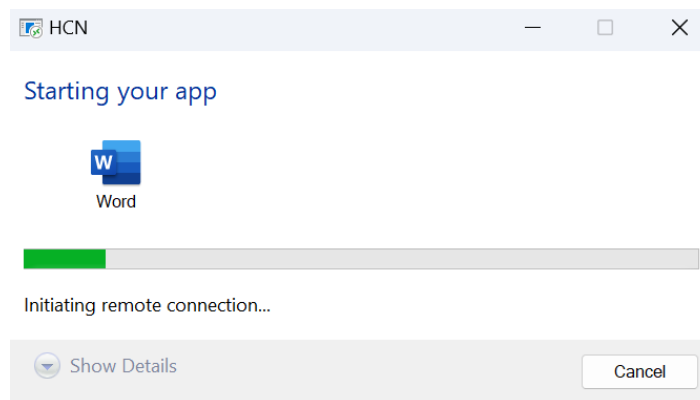
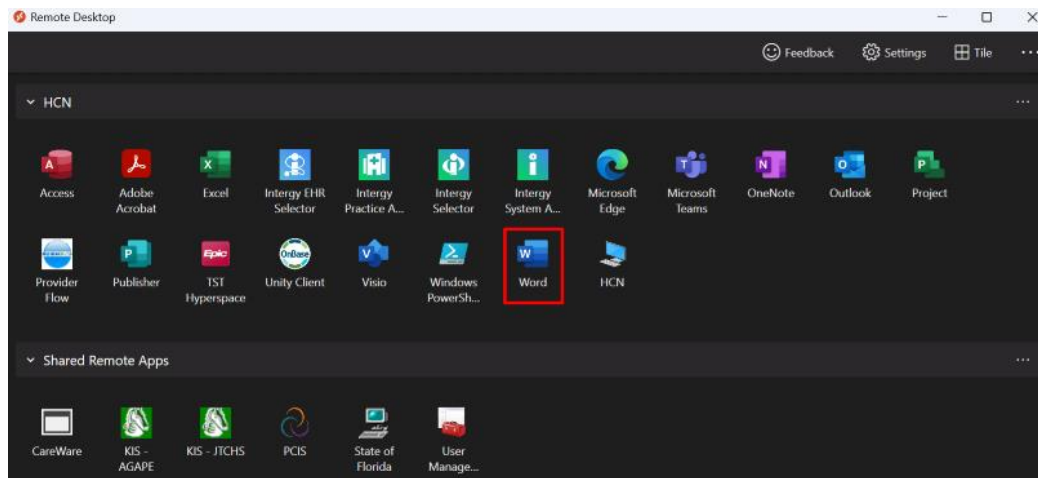


Connect to your applications.

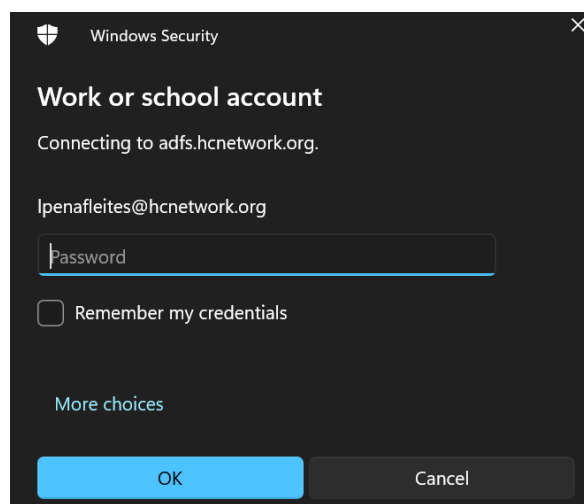
1. Open the Remote Desktop Client on your device.



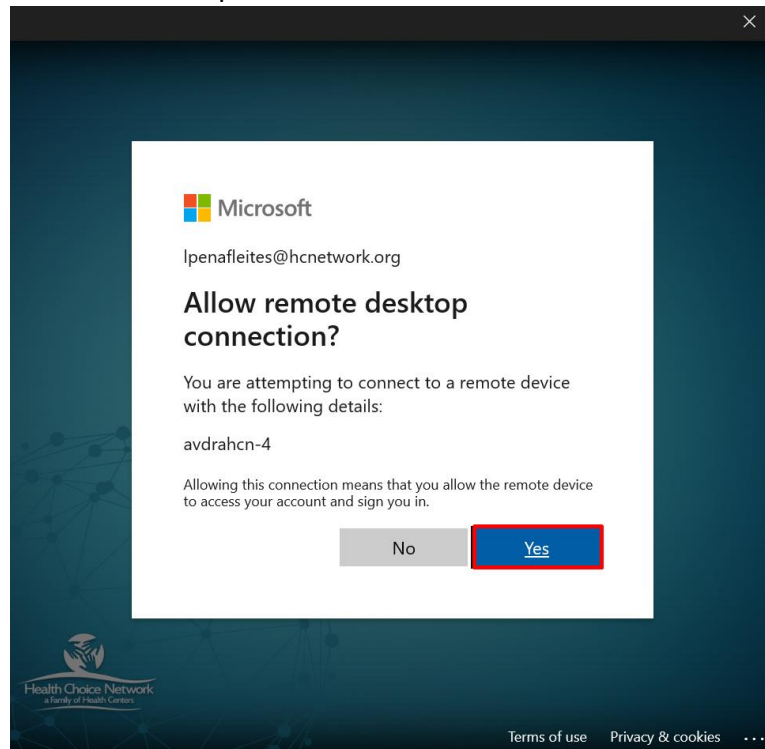
2. Double-click one of the icons to launch a session to one of your PubApps. For this example, we will open the Microsoft Word remote app. You may be prompted to enter the password for your user account.



Proceed to authenticate with your domain username and password.



Select Yes to allow remote desktop connections.



Finally, you will see your remote Microsoft Word application open. You can differentiate your local Microsoft application from the remote one. Every remote application in AVD will appear with this symbol over the application 